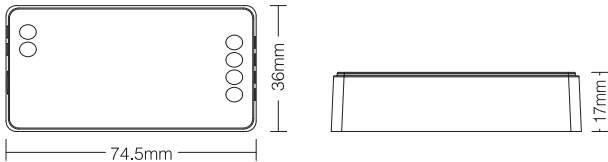


Dual White LED Controller (Model No.: FUT035S)
Single Color LED Controller (Model No.: FUT036S)

Features

Controller adopt the widely used 2.4GHz wireless technology with the features of low power consumption, long signal transmitting and strong anti-interference, etc. Controller has auto-transmitting and auto-synchronizing function. Widely used on the controlling of hotel lighting and home lighting.

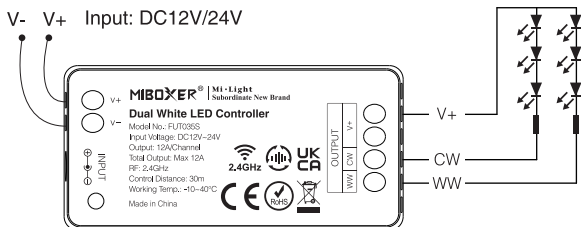


Dual White LED Controller

Model No.: FUT035S

Working Voltage: DC12V~24V RF: 2.4GHz
Output: 12A/Channel Max Controlling Distance: 30m
Total Output: Max 12A Working Temperature: -10~40°C
Output Connection: Common anode

- Color temperature adjustable
- Dim brightness
- 2.4G RF wireless transmission technology
- Remote control Control distance 30m
- Smartphone APP control (2.4GHz gateway is needed)
- Support third party voice control (2.4GHz gateway is needed)

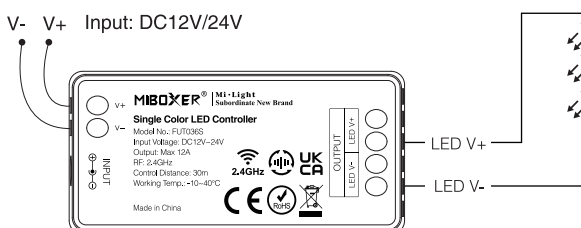


Single Color LED Controller

Model No.: FUT036S

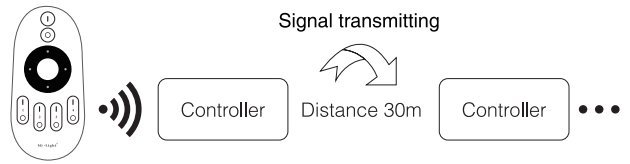
Working Voltage: DC12V~24V RF: 2.4GHz
Output: Max 12A Max Controlling Distance: 30m
Output Connection: Common anode Working Temperature: -10~40°C

- Dim brightness
- 2.4G RF wireless transmission technology
- Remote control Control distance 30m
- Smartphone APP control (2.4GHz gateway is needed)
- Support third party voice control (2.4GHz gateway is needed)



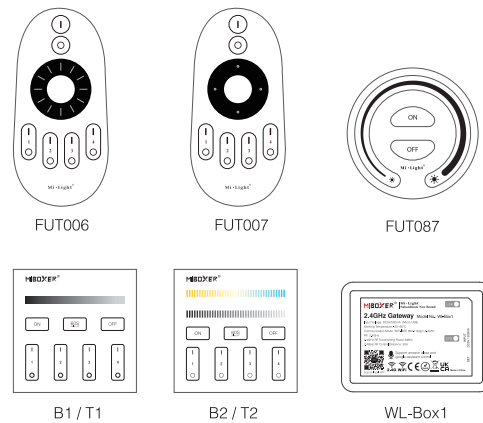
Signal transmitting

One strip controller can transmit the signals from the remote control to another controller within 30m, as long as there is a strip controller within 30m, the remote control distance can be limitless.



Link/Unlink

Compatible with these remote controls (Purchase separately)



Light will work after linking with remote control; for more details, pls read the remote instruction.

PWM high frequency / low frequency switching

Switch to high frequency (8KHz): on the condition of turning on the light

1. Short press the "OFF" button of the remote control once;
2. Short press the "ON" button 5 times within 3 seconds, the white light blink 2 times quickly, indicating successfully.

Switch to low frequency (500Hz): on the condition of turning off the light

1. Short press the "ON" button of the remote control once;
2. Short press the "OFF" button 5 times within 3 seconds, the white light blink 2 times slowly, indicating successfully.

Attention

1. Please check whether the voltage of the power supply is in accordance with the controller, and please check the connection of both the cathode and anode, otherwise the controller will be broken.
2. Please don't connect wires with power on. Please turn on again only when it is in right connection and no short circuit.
3. Please do not use the controller in the place with widely range metal area or strong electromagnetic wave nearby, otherwise, the remote distance will be seriously affected .

