

Mi·Light® Color Temperature Remote Control

Model No.: FUT006 / FUT007

Features

This manual describes two types of remote controls with same functions. Adopt world-wide used 2.4GHz frequency, GFSK control method, with the features of low power consumption, long distance transmitting, strong anti-interference and fast communication rate. Can control specified Mi-Light / MiBoxer smart light with color temperature and brightness changing.

Parameters

Product Name: Color Temperature Remote Control (Rotating Wheel)

Model No.: FUT006

Voltage: 3V(AAA * 2PCS)

Transmission Frequency: 2.4GHz

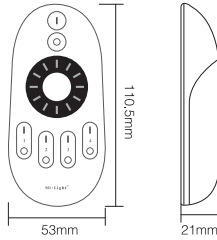
Modulation Method: GFSK

Transmitting Power: 6dBm

Standby Power Consumption: 20uA

Control Distance: 30m

Size: 53*21*110.5mm



Product Name: Color Temperature Remote Control (Full Button)

Model No.: FUT007

Voltage: 3V(AAA * 2PCS)

Transmission Frequency: 2.4GHz

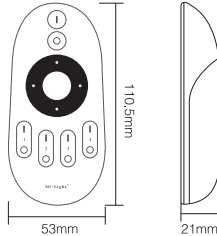
Modulation Method: GFSK

Transmitting Power: 6dBm

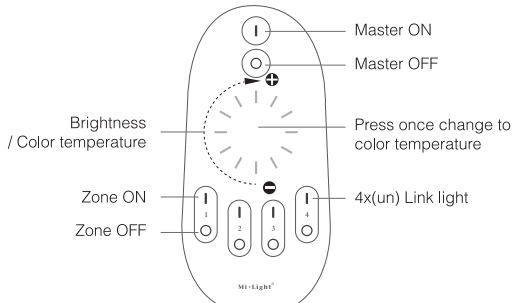
Standby Power Consumption: 5uA

Control Distance: 30m

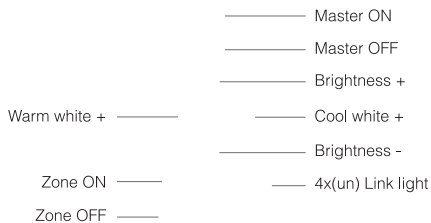
Size: 53*21*110.5mm



Products Key Diagram



FUT006



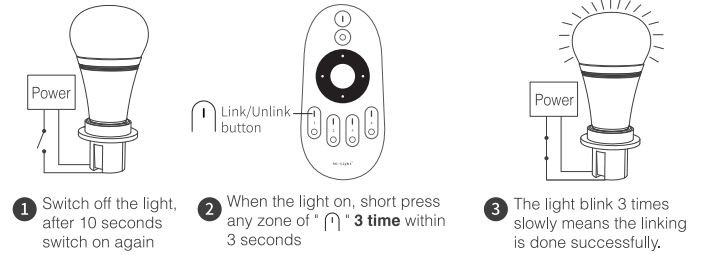
FUT007

- To dim all dual white lights at once or change the color temperature, first press 'Master ON'.
- To do this with individual lights, first press 'Zone ON'. Second, set the adjustment for color temperature or brightness.
- To turn on the night light mode of a single (dual white) light, press and hold the 'Zone OFF' from one of the 4 Zones.
- To turn on all the lights in night light mode, press and hold 'Master OFF'.
- For remote control FUT006, the default mode is to adjust the brightness, rotating the wheel from left to right, brightness up, from right to left, brightness down. Switching to adjusting the color temperature by pressing the middle button once, left to right, cooler, right to left, warmer.

Link Code / Unlink Code

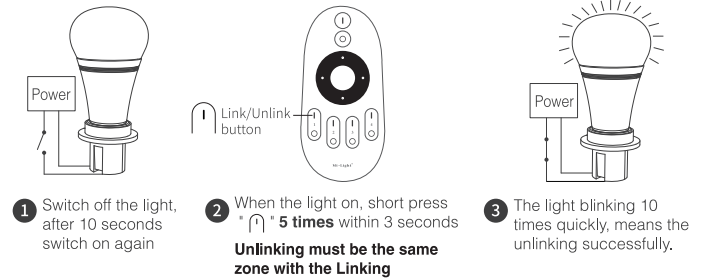
Remark: The light can be working after linking with the remote.

Link Code



! If the light not blink slowly, the linking failed, Pls switch off the light again, and follow the above steps again.

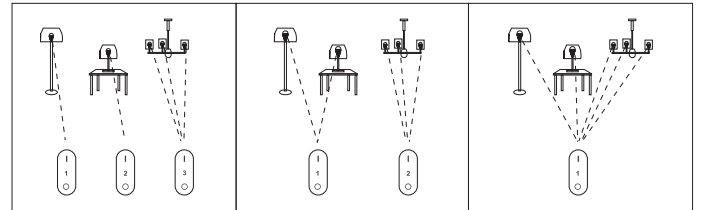
Unlink Code



! If the light not blink quickly, the unlink failed, pls switch off the light again, and follow the above steps to unlink again.

Grouping of several lights

You can add an endless numbers of lights to a zone on the 4 channel remote by linking the lights to different zones. This way you are completely flexible in creating different group combinations. Below you can see some grouping examples.



Remark:

1. The user can re-programme freely as needed. One remote can control countless lights or controllers, but one light or controller can only be controlled by four remotes (Max).
2. Please check the battery installation and controller (totally discharge the power), when you programme after switching off and switching on.

Attention

1. This remote only control specified Mi-Light / MiBoxer products; not all Mi-Light / MiBoxer series can work on this remote.
2. In the using of the remote, if the indicator light blinking quickly, pls change the battery in time. Pls don't use poor quality battery to avoid the leaking of battery liquid to damage the remote.
3. This 2.4G remote is precise electronic product; don't use it in humid, high temperature, dust and high voltage environment; Saving it at indoor, dry and no static electricity environment.
4. Pls don't use the remote on the wide-range metal or strong electromagnetic wave area, otherwise, it will badly affect the controlling distance.