

1. Features

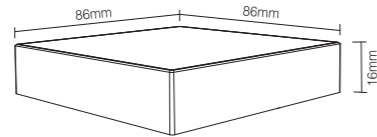
We adopt a high precision capacitive touch screen IC. Touch screen is very stable; 2.4GHz high RF wireless control with long distance controlling, low power consumption and high speed transmitting rate.

This product has T series and B series, and the difference is the method of power supplying. Both series have 4 kinds: T1/B1 4-zone dimmable panel remote; T2/B2 CCT 4-zone panel remote; T3/B3 4-zone RGB/RGBW panel remote; T4/B4 4-zone RGB+CCT panel remote. This product widely work on our smart LED Lighting, LED controller and smart panel controller, etc.

2. Parameters

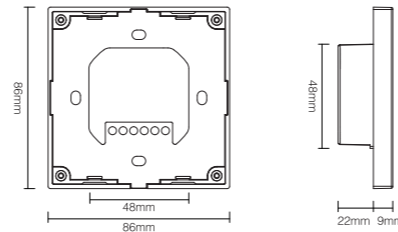
B Series: Powered by 3V(2*AAA Battery)

Working Voltage: 3V(2*AAA Battery) Working Temp.: -10~40°C
 Transmitting Power: 6dBm Control Distance: 30m
 Standby Power Consumption: 20uA Size: 86*86*16mm
 Transmission Frequency: 2.4GHz



T Series: Powered by AC100~240V

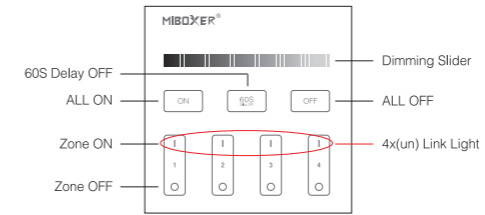
Working Voltage: AC100~240V Working Temp.: -10~40°C
 Standby Power: 0.15W Control Distance: 30m
 Transmitting Power: 6dBm Size: 86*86*31mm
 Transmission Frequency: 2.4GHz



3. Function of keys

Remark: When touching the button, LED indicating lamp will flash once with different sound (Touch slider with no sound).

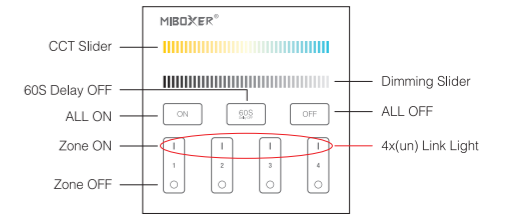
B1 & T1 4-Zone Panel Remote (Brightness)



Touch dimming slider to change the brightness from 1~100%.

- ON** Touch master ON, turn on all linked lights. Long press 5 seconds to turn ON the indicating sound.
- 60S** When the light is ON, press "60S Delay OFF", the light will be OFF Automatically after 60 seconds.
- OFF** Touch master OFF, turn off all linked lights. Long press 5 seconds to turn OFF the indicating sound.
- |** Touch Zone ON, turn on zone-linked lights.
- Touch Zone OFF, turn off zone-linked lights.

B2 & T2 4-Zone Panel Remote (Color Temp.)

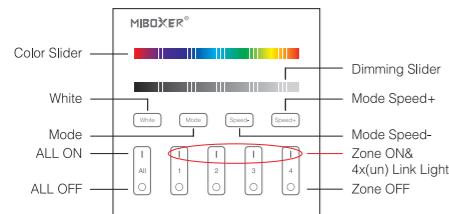


- Touch the slider to change color temperature.
- Touch dimming slider to change the brightness from 1~100%.
- ON** Touch master ON, turn on all linked lights. Long press 5 seconds to turn ON the indicating sound.
- 60S** When the light is ON, press "60S Delay OFF", the light will be OFF Automatically after 60 seconds.
- OFF** Touch master OFF, turn off all linked lights. Long press 5 seconds to turn OFF the indicating sound.
- |** Touch Zone ON, turn on zone-linked lights.
- Touch Zone OFF, turn off zone-linked lights.

Panel Remote

Model No.: T1 / T2 / T3 / T4 & B1 / B2 / B3 / B4

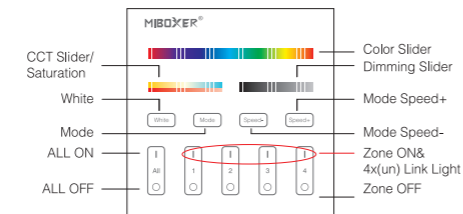
B3 & T3 4-Zone Panel Remote (RGBW)



- Touch color slider, choose the color you want.
- Touch dimming slider to change the brightness from 1~100%.
- White** Touch white button to white light mode.
- Mode** Switching modes.
- Speed-** Slow the speed on present dynamic mode.
- Speed+** Accelerate the speed on present dynamic mode.

- |** **ALL ON:** Touch to turn on all linked lights. Long press 5 seconds to turn ON the indicating sound.
Zone(1-4) ON: Touch zone ON, turn on zone-linked lights.
- **ALL OFF:** Touch to turn off all linked lights. Long press 5 seconds to turn OFF the indicating sound.
Zone(1-4) OFF: Touch zone OFF, turn off zone-linked lights.

B4 & T4 4-Zone Panel Remote (RGB+CCT)

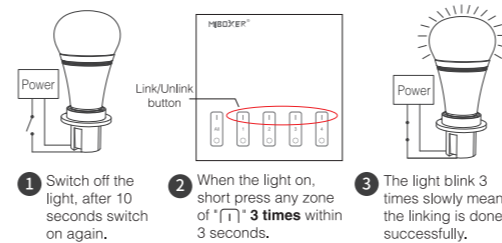


- Touch color slider, choose the color you want.
- Under white light mode, adjust color temperature; Under color light mode, change color saturation.
- Touch dimming slider to change the brightness from 1~100%.
- White** Touch white button to white light mode.
- Mode** Switching modes.
- Speed-** Slow the speed on present dynamic mode.
- Speed+** Accelerate the speed on present dynamic mode.

- |** **ALL ON:** Touch to turn on all linked lights. Long press 5 seconds to turn ON the indicating sound.
Zone(1-4) ON: Touch zone ON, turn on zone-linked lights.
- **ALL OFF:** Touch to turn off all linked lights. Long press 5 seconds to turn OFF the indicating sound.
Zone(1-4) OFF: Touch zone OFF, turn off zone-linked lights.

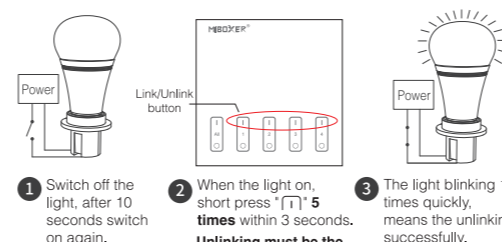
4. Link / Unlink (B1~B4, T1~T4)

Linking Instructions



! If the light not blink slowly, the linking failed, pls switch off the light again, and follow the above steps again.

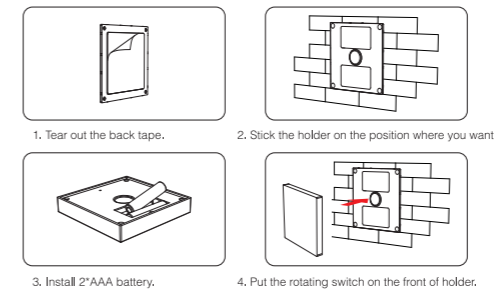
Unlinking Instructions



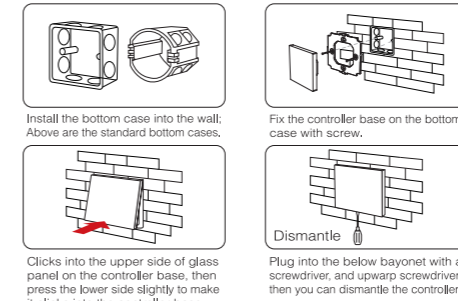
! If the light not blink quickly, the unlink failed, pls switch off the light again, and follow the above steps to unlink again.

5. Installation

B series Installation



T series Installation/ Dismantlement



6. Attention

1. Please check the cable, and make the circuit is correct before power on.
2. When installation, pls handle with care to avoid the broken of the T series glass panel.
3. Please do not use lighting fixtures around the mental area and high magnetic field, otherwise, it will badly affect the control distance.