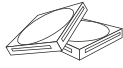


# LED Neon Extron 7.5x13

external neon for signage



10W/m



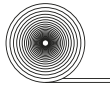
120SMD/m



0.83cm



2.5cm



5m

IP65

2 YEAR  
warranty

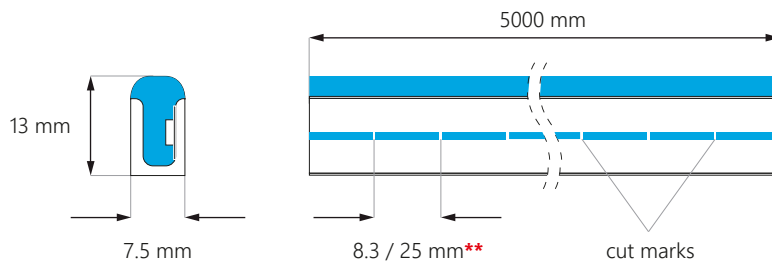


12V  
DC

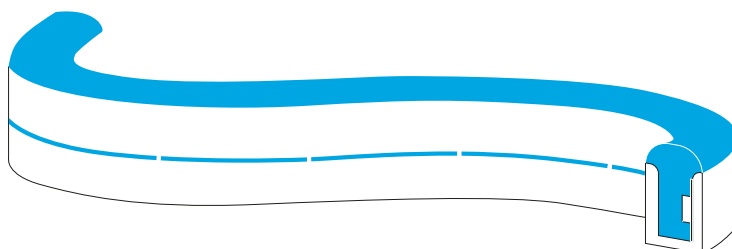
- **high** luminous efficacy
- energy **saving**
- **superb** quality
- lifetime **up to 50000 hours**
- **outdoor / indoor** use



## DIMENSIONS\*

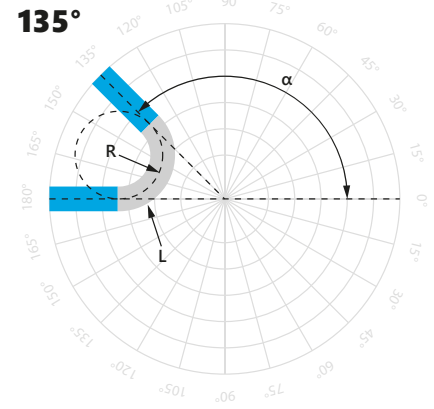
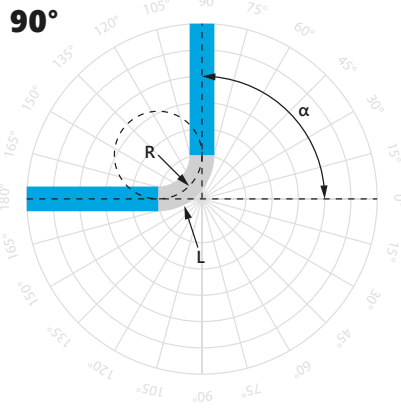
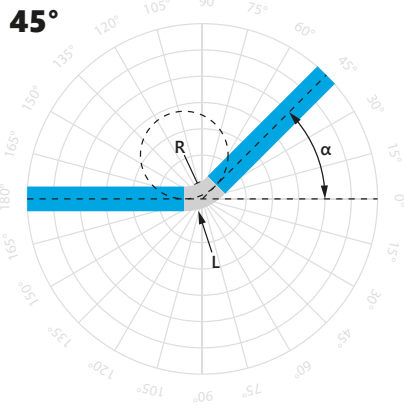


## LIGHTING SURFACE



\* SIZE 6x12: available on request  
\*\* CUT SECTION: 8.3 mm: QW, WW, NW, WH, YL | 25 mm: BL, GR, RD

# MINIMUM LENGTHS OF LED NEON BENDING



$\alpha$ – LED neon bend angle	45°	90°	135°
R – LED neon bend radius	3 cm	3 cm	3 cm
L – LED neon bend length ( $L = \alpha / 360^\circ \times 2\pi \times R$ )	2.355 cm	4.71 cm	7.065 cm

## TECHNICAL SPECIFICATION

Input voltage	12V DC
Nominal power usage per meter	10 W
Nominal power usage per reel	50 W
LEDs density per meter	120 SMD
LEDs density per reel	600 SMD
Colour rendering index	$\geq 80$ (for white colour)
Beam angle	120°
Dimmable	YES
Neon dimensions (W x H)	7.5 x 13 mm
Neon length	5 m
Cut section	0.83 cm (QW, WW, NW, WH, YL) / 2.5 cm (BL, GR, YL, RD)
Bend radius	$\geq 3$ cm
Lifespan	$\sim 50000$ h
Working temperature	$-40^\circ\text{C} \div +65^\circ\text{C}$
IP Rating	IP65
Compliance with	CE / RoHS / WEEE / UL listed
Warranty	2 years
Energy class	G

## POSSIBLE COLOURS

Abbreviation	CCT / Light colour	Luminous efficacy
QW	$\sim 2700\text{K}$	300 lm/m
WW	$\sim 3000\text{K}$	300 lm/m
NW	$\sim 4000\text{K}$	330 lm/m
WH	$\sim 6500\text{K}$	330 lm/m
BL	blue	25 lm/m
GR	green	33 lm/m
YL	yellow	175 lm/m
RD	red	60 lm/m

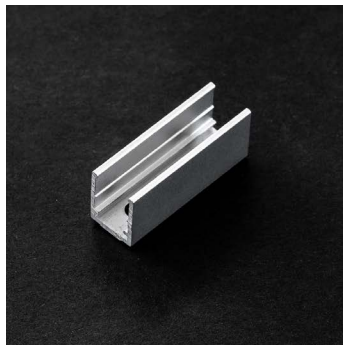
## ACCESSORIES



- basic **end caps**
- **two versions:** with and without holes for wires
- **1 pcs each** / set



- basic **mounting holders**
- made of **plastic**



- additional **mounting holders**
- made of **aluminum alloy**
- dimensions: **30 x 10 x 12 mm**



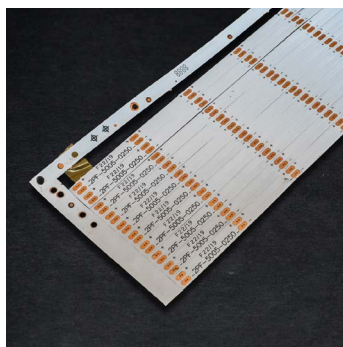
- additional **mounting holders**
- made of **aluminum alloy**
- dimensions: **1000 x 10 x 12 mm**



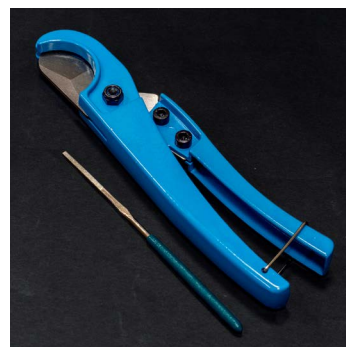
- 1-core wire (**Cu 100%**)
- sold in sets: **2 reels of 5 m**
- **Ø 0.45 mm<sup>2</sup>**



- 2-core wire (**Cu 100%**)
- sold in **reels of 100 m**
- **Ø 0.5 mm<sup>2</sup>**



- **support base**
- section length **2.5 cm**
- sold in **strips of 20 pcs**



- neon **cutter**
- **sharpening file** included

## DOWNLOAD AREA

### LED Neon installation guides

 <https://www.epiled.pl/download/led-neon-installation-guide-en.pdf>

 [https://www.youtube.com/watch?v=1\\_TWw\\_FDqpY](https://www.youtube.com/watch?v=1_TWw_FDqpY)

### EU Declaration of Conformity

<https://www.epiled.pl/download/deklaracje/eu-declaration-of-conformity-led-neons.pdf>