

# LED Neon Basic 6x12

internal neon with brilliant colour options

G



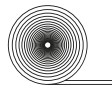
10W/m



100SMD/m



1cm



5m

IP40

2 YEAR  
warranty



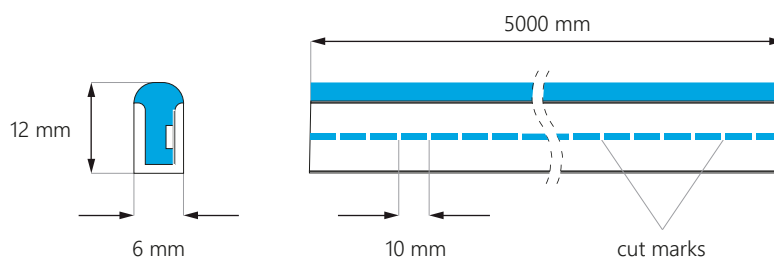
PWM

12V  
DC

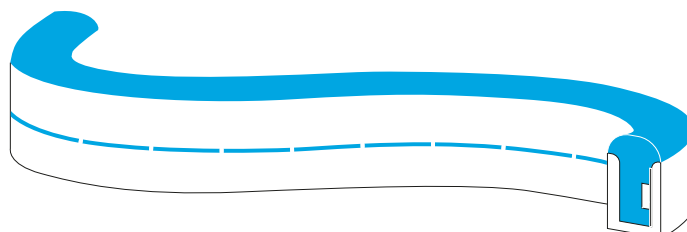
- **high** luminous efficacy
- energy **saving**
- **superb** quality
- **wide range** of colours
- **indoor** use



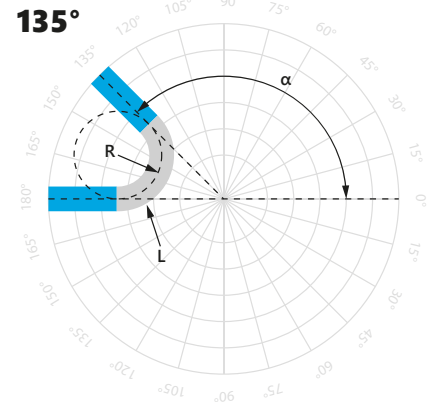
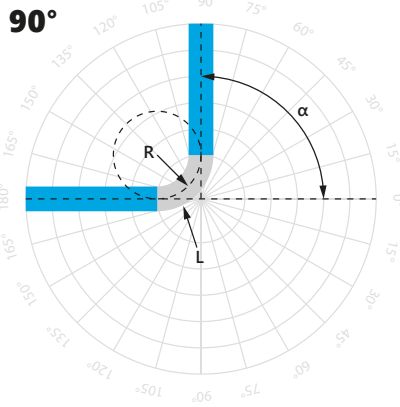
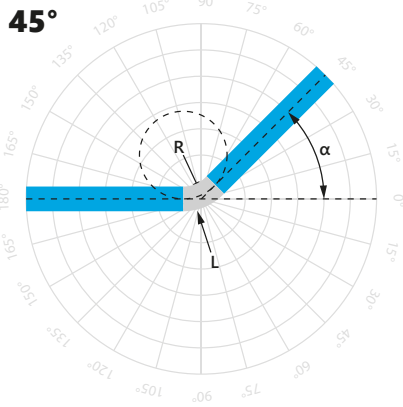
## DIMENSIONS



## LIGHTING SURFACE



# MINIMUM LENGTHS OF LED NEON BENDING



$\alpha$ – LED neon bend angle	45°	90°	135°
R – LED neon bend radius	3 cm	3 cm	3 cm
L – LED neon bend length ( $L = \alpha / 360^\circ \times 2\pi \times R$ )	2.355 cm	4.71 cm	7.065 cm

## TECHNICAL SPECIFICATION

Input voltage	12V DC
Nominal power usage per meter	10 W
Nominal power usage per reel	50 W
LEDs density per meter	100 SMD
LEDs density per reel	500 SMD
Colour rendering index	$\geq 80$ (for white colour)
Beam angle	120°
Dimmable	YES
Neon dimensions (W x H)	6 x 12 mm
Neon length	5 m
Cut section	1 cm
Bend radius	$\geq 3$ cm
Lifespan	$\sim 25000$ h
Working temperature	$-40^\circ\text{C} \div +65^\circ\text{C}$
IP Rating	IP40
Compliance with	CE / RoHS / WEEE / UL listed
Warranty	2 years
Energy class	G

## POSSIBLE COLOURS

Abbreviation	CCT / Light colour	Luminous efficacy
WW	$\sim 3000\text{K}$	398 lm/m
NW	$\sim 5000\text{K}$	415 lm/m
WH	$\sim 6500\text{K}$	431 lm/m
PK	pink	38 lm/m
LIGHTPK	light pink	42 lm/m
VL	violet	48 lm/m
BL	blue	36 lm/m
IBL	ice blue	207 lm/m
GR	green	144 lm/m
YL	yellow	170 lm/m
GY	golden yellow	24 lm/m
OR	orange	22 lm/m
RD	red	34 lm/m

## ACCESSORIES



- basic **end caps**
- **5 pcs** / set
- **various** colours
- **primary** protection



- additional **end caps**
- sold **separately**
- **two versions**: with and without holes for wires
- **enhanced** protection



- basic **mounting holders**
- **5 pcs** / set
- made of **plastic**



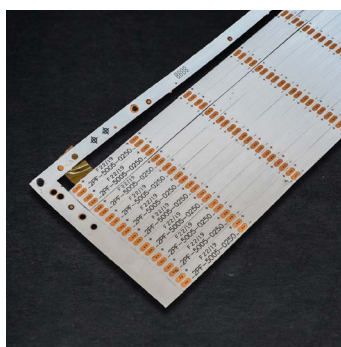
- additional **mounting holders**
- sold **separately**
- made of **aluminum alloy**
- dimensions: **30 x 8 x 12 mm**



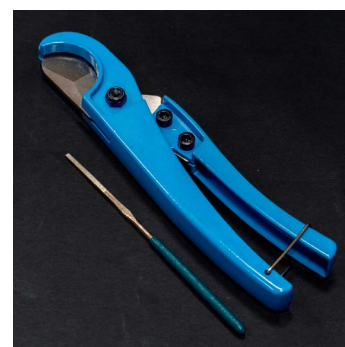
- 1-core wire (**Cu 100%**)
- sold in sets: **2 reels of 5 m**
- **Ø 0.45 mm<sup>2</sup>**



- 2-core wire (**Cu 100%**)
- sold in **reels of 100 m**
- **Ø 0.5 mm<sup>2</sup>**



- **support base**
- section length **2.5 cm**
- sold in **strips of 20 pcs**



- neon **cutter**
- **sharpening file** included

## DOWNLOAD AREA

### LED Neon installation guides

 <https://www.epiled.pl/download/led-neon-installation-guide-en.pdf>

 [https://www.youtube.com/watch?v=1\\_TWw\\_FDqpY](https://www.youtube.com/watch?v=1_TWw_FDqpY)

### EU Declaration of Conformity

<https://www.epiled.pl/download/deklaracje/eu-declaration-of-conformity-led-neons.pdf>