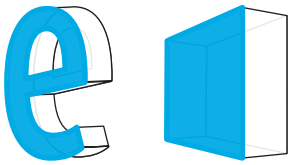


# Opticor<sup>3</sup>

10-22 cm  
channel letters / lightboxes



1.44W

12V  
DC



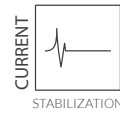
135lm



160°

IP67

5  
YEAR  
warranty



CURRENT  
STABILIZATION

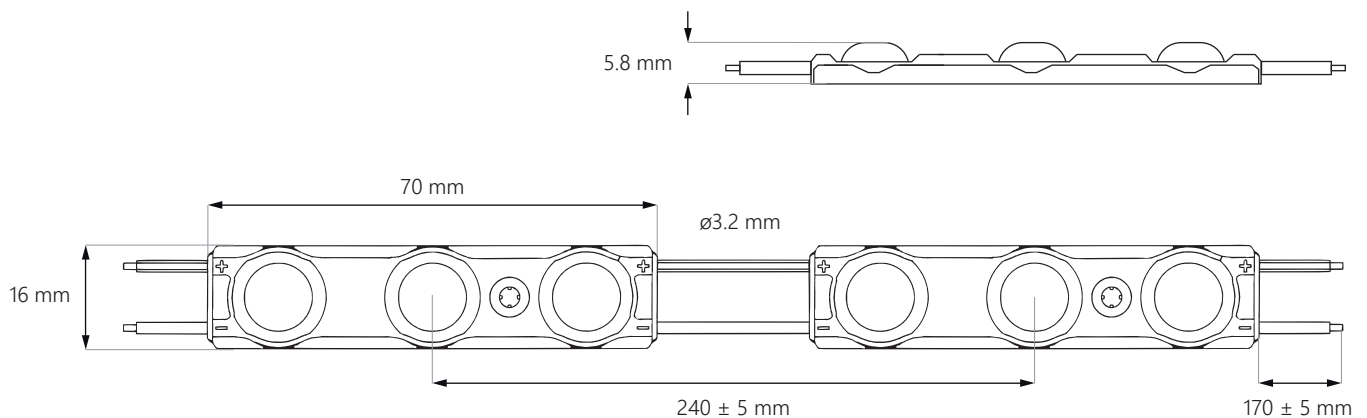


PWM

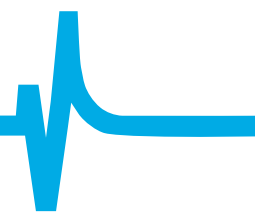
- perfect for **day & night letters**
- constant current **stabilization**
- **indoor / outdoor** use
- chain of **30 pcs**



## DIMENSIONS



# Opticor<sup>3</sup>

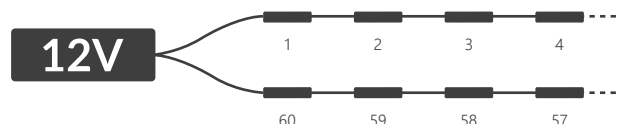


## CONNECTION DIAGRAM

one-side power input: **max 30 pcs**



two-side power input: **max 60 pcs**



## TECHNICAL SPECIFICATION

Input voltage	12V DC
Nominal power usage per module	1.44 W*
Nominal power usage per chain	43.2 W*

Colour rendering index	≥82
Beam angle	160°
Current stabilization	YES
Dimmable	YES

Module dimensions (L x W x D)	70 x 16 x 5.8 mm
Cable length	170 ± 5 mm
Module length including cable	240 mm
Chain length	7.2 m
No. of modules in 1 m	4.16 pcs

Lifespan	~50000 h
Working temperature	-40°C ÷ +60°C
IP Rating	IP67
Compliance with	CE / RoHS / WEEE / UL listed
Warranty	5 years

\* given data refers to white colour

## CCT / LIGHT COLOUR\*

Abbreviation	Light colour	CCT
WW	warm white	~3000K
NW	neutral white	~4000K
WH	daily white	~6500K
CW	cold white	~10000K
BL	blue	460-470 nm
GR	green	520-530 nm
YL	yellow	575-585 nm
RD	red	620-630 nm

\* ask our sales team for details of available colours

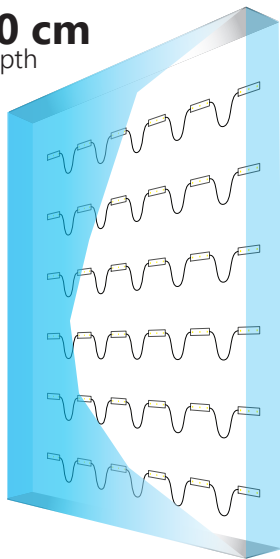
# Opticor<sup>3</sup>



## APPLICATION

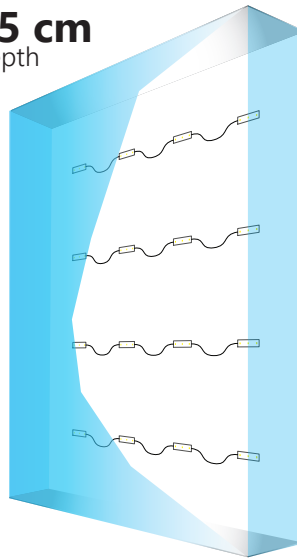
best for channel letters and lightboxes with a depth of **10-22 cm**

**10 cm**  
depth



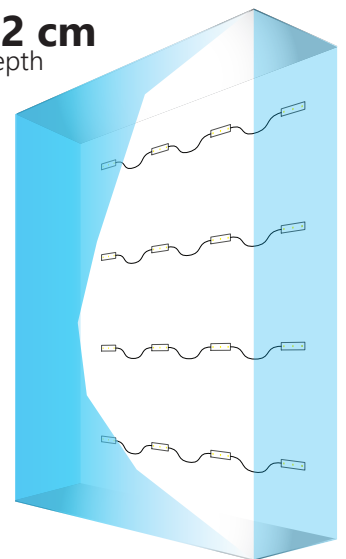
Area: **1 m<sup>2</sup>**  
CC distance: **17 cm**  
No. of modules: **36 pcs**  
Lumen output: **4860 lm**  
Power usage: **51.84 W**

**15 cm**  
depth



Area: **1 m<sup>2</sup>**  
CC distance: **24 cm**  
No. of modules: **16 pcs**  
Lumen output: **2160 lm**  
Power usage: **23.04 W**

**22 cm**  
depth



Area: **1 m<sup>2</sup>**  
CC distance: **24 cm**  
No. of modules: **16 pcs**  
Lumen output: **2160 lm**  
Power usage: **23.04 W**

**NOTE: the exact number of modules depends on the used materials and the effect we want to achieve.  
Given data refers to white colour.**

## PACKING INFORMATION

	Chain	Bag	Box
Quantity	30 pcs	120 pcs	1920 pcs
Gross weight	0.34 kg	1.35 kg	18.4 kg

## DOWNLOAD AREA

### LED Module installation guide

<https://www.epiled.pl/download/led-module-installation-guide.pdf>

### EU Declaration of Conformity

<https://www.epiled.pl/download/deklaracje/eu-declaration-of-conformity-led-modules.pdf>

© 2024, epiLED. All rights reserved. Data is subject to change without notice. | Rev.: 2406

ul. Stanisławowska 27, 54-611 Wrocław • Poland • [info@epiLED.pl](mailto:info@epiLED.pl) • [www.epiLED.pl](http://www.epiLED.pl)